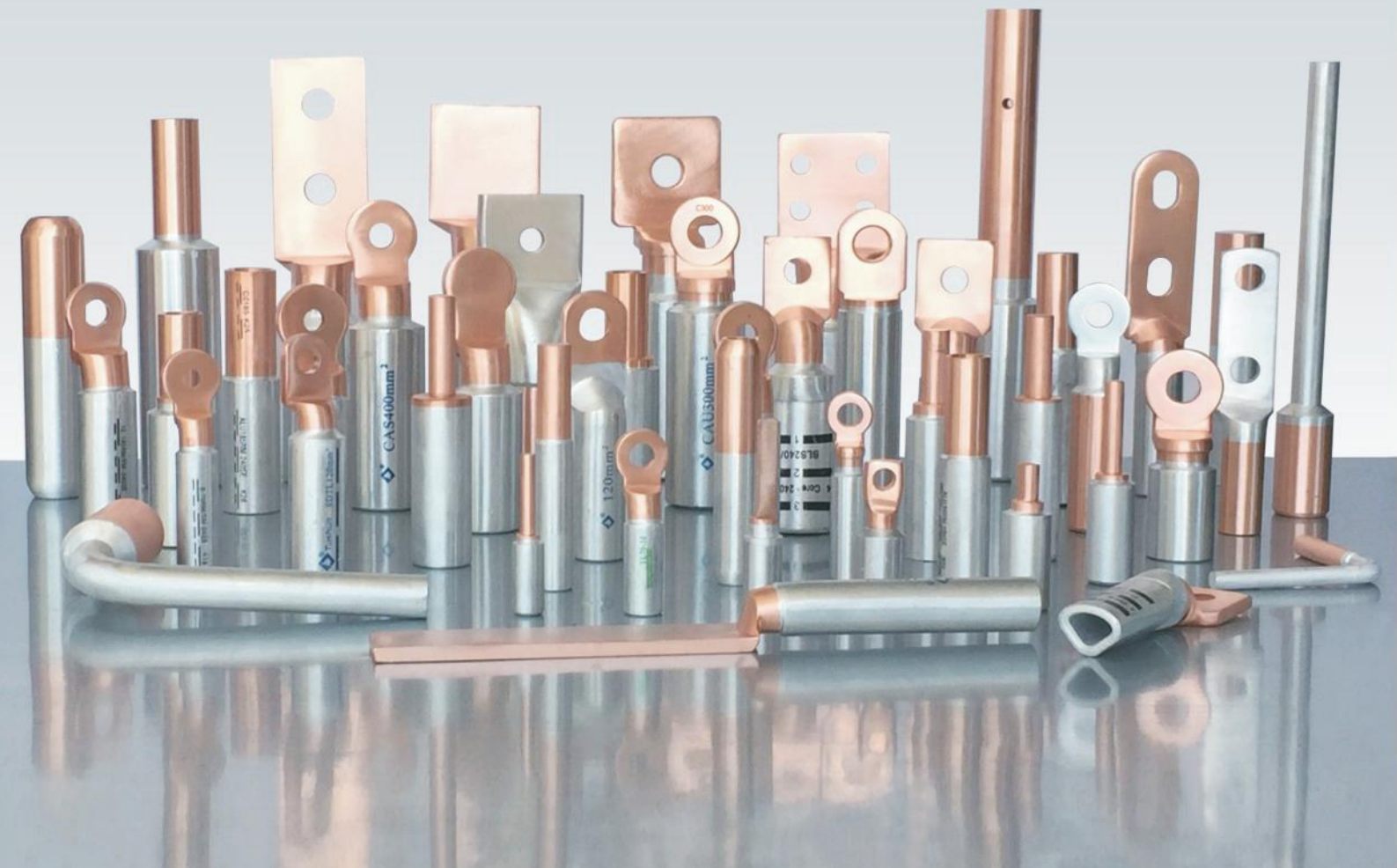




Bi-Metal Lugs & Connectors(Links)

銅鋁端子和連接管 ▶▶



CAS Bi-Metal Lugs

CAS系列銅鋁接綫端子

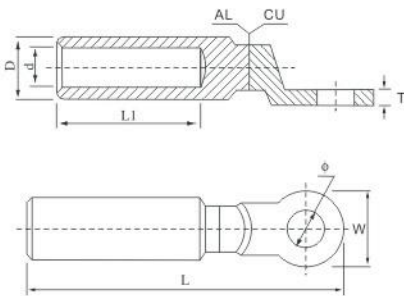
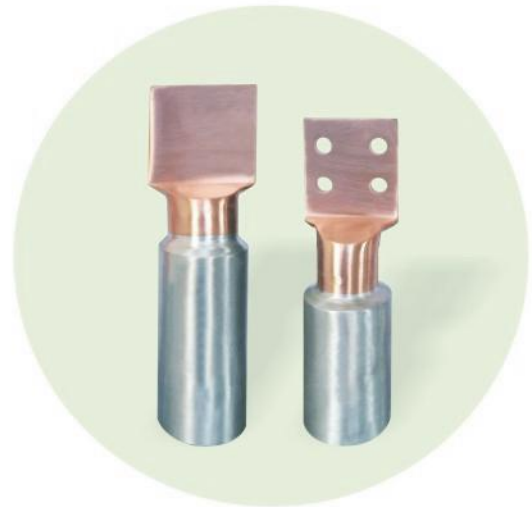
Technical Data

Material: 99.5% pure aluminium

99.95% pure copper

Joining Method: Friction Welding

Operation Temperature: -40°C to 100°C



Part No.	Cable Spec.(mm ²)	Dimensions(mm)						
		D	d	L1	L	W	T	Φ
CAS-16	16	16	5.5	42	90	24	4	M8,M10
CAS-25	25	16	6.5	42	90	24	4	M8,M10
CAS-35	35	16	8	42	90	24	4	M8,M10
CAS-50	50	20	9	43	92	24	5	M10,M12
CAS-70	70	20	11	43	92	24	5	M10,M12
CAS-95	95	20	12.5	43	92	24	5	M10,M12
CAS-120	120	25	13.5	60	117	30	6	M12
CAS-150	150	25	15.5	60	117	30	6	M12
CAS-185	185	32	17	60	124	35	6.5	M12, M16
CAS-240	240	32	19.5	60	124	35	6.5	M12, M16
CAS-300	300	34	22.5	62	130	36	7	M12, M16
CAS-300	300	40	23.3	90	160	36	8	M12, M16
CAS-400	400	40	26	90	160	36	8	M12, M16
CAS-500	500	47	29.1	94	200	60×60	10	M16, M20
CAS-630	630	47	32.5	94	200	60×60	10	M16, M20
CAS-800	800	60	37.5	120	260	80×80	10	M16, M20
CAS-1000	1000	60	42	120	260	80×80	10	M16, M20

CAU Bi-Metal Lugs

CAU系列銅鋁接綫端子

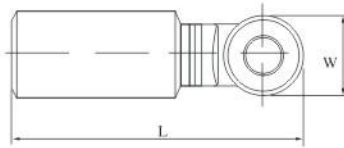
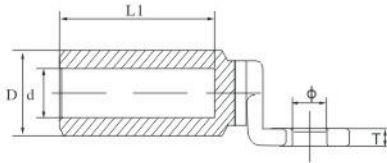
Technical Data

Material: 99.5% pure aluminium

99.95% pure copper

Joining Method: Friction Welding

Operation Temperature: -40°C to 100°C



Part No.	Cable Spec.(mm ²)	Dimensions(mm)						
		D	d	L1	L	W	T	Φ
CAU-16	16	20	5.5	43	86	25	5	M8,M10
CAU-25	25	20	6.5	43	86	25	5	M8,M10
CAU-35	35	20	8	43	86	25	5	M8,M10
CAU-50	50	20	9	43	86	25	5	M10,M12
CAU-70	70	20	11	43	86	25	5	M10,M12
CAU-95	95	20	12.5	43	86	25	5	M10,M12
CAU-120	120	25	15	59	110	30	6	M12
CAU-150	150	25	16	59	110	30	6	M12
CAU-185	185	32	17	59	110	30	6	M12, M16
CAU-240	240	32	20	59	110	30	6	M12, M16
CAU-300	300	40	23.3	90	160	36	7.5	M12, M16
CAU-400	400	40	26	90	160	36	7.5	M12, M16
CAU-500	500	47	29.1	93	200	60×60	9.5	M16, M20
CAU-630	630	47	32.5	93	200	60×60	9.5	M16, M20

DTL Bi-Metal Lugs

DTL系列銅鋁接綫端子

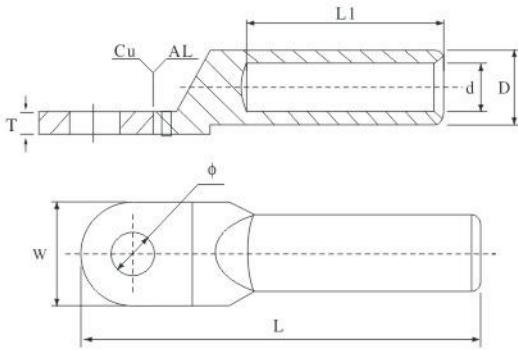
Technical Data

Material: 99.5% pure aluminium

99.95% pure copper

Joining Method: Friction Welding

Operation Temperature: -40°C to 100°C



Part No.	Cable Spec.(mm ²)	Dimensions(mm)						
		D	d	L	L1	W	S	Φ
DTL-10	10	10	5.0	65	32	16	2.7	M8
DTL-16	16	10	5.5	70	32	16	3.0	M8
DTL-25	25	12	7.0	75	34	18	3.5	M8
DTL-35	35	14	8.5	85	40	20	3.5	M10
DTL-50	50	16	9.5	90	42	23	4.0	M10
DTL-70	70	18	12.0	102	47	26	4.5	M12
DTL-95	95	21	13.0	112	50	28	5.0	M12
DTL-120	120	23	15.0	120	53	30	5.5	M14
DTL-150	150	25	16.0	126	55	34	6.0	M14
DTL-185	185	27	18.0	133	58	37	6.5	M16
DTL-240	240	30	20.0	140	60	40	7.5	M16
DTL-300	300	34	23.0	165	65	45	8.5	M20
DTL-400	400	38	26.0	170	70	52	9.5	M20
DTL-500	500	42	29.0	190	75	60	10.0	M20
DTL-630	630	54	34.0	225	80	78	10.5	Square Palm
DTL-800	800	60	38.0	270	90	100	11.0	Square Palm

AUS STD Bi-Metal Lugs

AUS系列銅鋁接綫端子

Technical Data

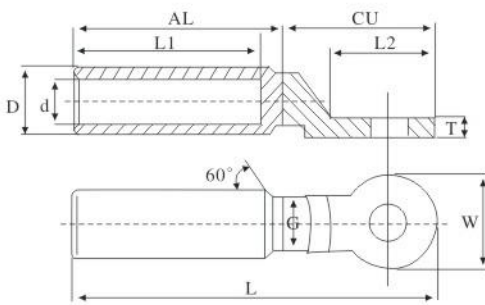
Material: 99.5% pure aluminium

99.95% pure copper

Joining Method: Friction Welding

Operation Temperature: -40°C to 100°C

Conformant Standards: AS4325-1(AUS.)



Part No.	Cable Spec.(mm ²)	Dimensions(mm)						
		d	D	W	L	L1	T	Φ
BMTL-25	25	7.5	12	22	75	32	4.5	M8,M10
BMTL-35	35	8.5	12	22	75	32	4.5	M8,M10
BMTL-50	50	9.5	16	22	75	32	5	M10,M12
BMTL-70	70	11.5	16	22	75	32	5	M10,M12
BMTL-95	95	13.5	21.5	30	115	60	6	M10,M12
BMTL-120	120	15.5	21.5	30	115	60	6	M12
BMTL-150	150	16.5	27	35	120	60	6	M12
BMTL-185	185	18.5	27	35	120	60	6	M12, M16
BMTL-240	240	22	35	35	135	60	7	M12, M16
BMTL-300	300	23.5	35	35	135	60	7	M12, M16
BMTL-400	400	26.5	47	50	165	70	10	M12, M16
BMTL-500	500	30	47	50	165	70	10	M16, M20
BMTL-630	630	34	54	50	185	70	10	M16, M20

DIN STD Bi-Metal Lugs

DIN系列銅鋁接綫端子

Technical Data

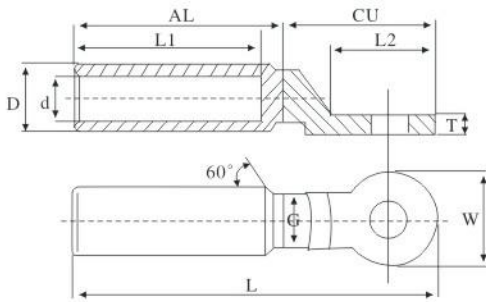
Material: 99.5% pure aluminium

99.95% pure copper

Joining Method: Friction Welding

Operation Temperature: -40°C to 100°C

Conformant Standards: DIN 46267



Part No.	Cable Spec.(mm ²)	Dimensions(mm)						
		d	D	W	L	L1	T	Φ
CAS-DIN-10	10	5	10	20	60	16	4.5	M8
CAS-DIN-16	16	5.6	12	20	70	26	4.5	M10
CAS-DIN-25	25	6.8	12	20	75	31	4.5	M10
CAS-DIN-35	35	8	14	20	85	41	4.5	M10
CAS-DIN-50	50	9.8	16	26	88	41	5.5	M12
CAS-DIN-70	70	11.2	18.5	26	98	48	5.5	M12
CAS-DIN-95	95	13.2	22	26	99	48	5.5	M12
CAS-DIN-120	120	14.7	23	26	101	49	5.5	M12
CAS-DIN-150	150	16.3	25	30	115	58.5	6	M12
CAS-DIN-185	185	18.3	28.5	30	117	58.5	6	M12
CAS-DIN-240	240	21	32	30	127	69	6	M12
CAS-DIN-300	300	23.3	34	30	131	69	6	M12
CAS-DIN-400	400	26	38.5	36	143	70	7	M12
CAS-DIN-500	500	29	44	44	162	80	7	M12
CAS-DIN-625	625	35	52	50	202	111	7	M12

PDTL Bi-Metal Lugs

PDTL系列銅鋁接綫端子

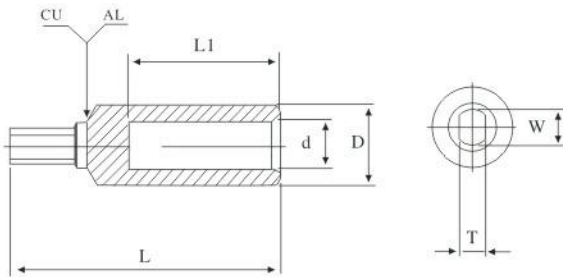
Technical Data

Material: 99.5% pure aluminium

99.95% pure copper

Joining Method: Friction Welding

Operation Temperature: -40°C to 100°C



Part No.	Cable Spec.(mm ²)	Dimensions(mm)					
		D	d	L1	L	W	T
PDTL-10	10	12	4.5	20	40	5.5	3
PDTL-16	16	12	5.5	20	40	5.5	3
PDTL-25	25	14	6.5	30	50	5.5	3
PDTL-35	35	14	8.5	30	50	7	5
PDTL-50	50	16	9.5	30	53	7	5
PDTL-70	70	20	11.5	40	70	9	7
PDTL-95	95	20	13.5	40	70	9	7
PDTL-120	120	25	15	45	75	10	8
PDTL-150	150	25	17	45	75	10	8

FDTL Bi-Metal Lugs

FDTL系列銅鋁接綫端子

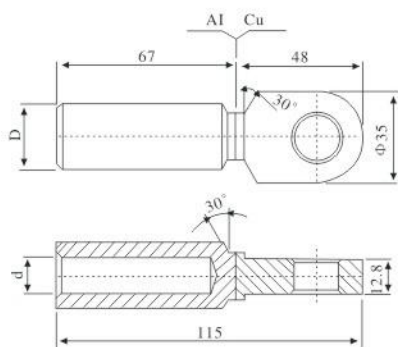
Technical Data

Material: 99.5% pure aluminium

99.95% pure copper

Joining Method: Friction Welding

Operation Temperature: -40°C to 100°C



Part No.	Cable Spec.(mm ²)	Dimensions(mm)		
		d	D	L
FDTL-35	35	8.5	20	151
FDTL-50	50	9.5	20	151
FDTL-70	70	11.5	20	151
FDTL-95	95	13.5	20	151
FDTL-120	120	15.5	25	151
FDTL-150	150	17	25	151
FDTL-185	185	19	32	151
FDTL-240	240	21	32	151
FDTL-300	300	23	40	151
FDTL-400	400	26	40	151
FDTL-500	500	27.3	47	151

GTL Bi-Metal Connectors

GTL系列銅鋁連接管

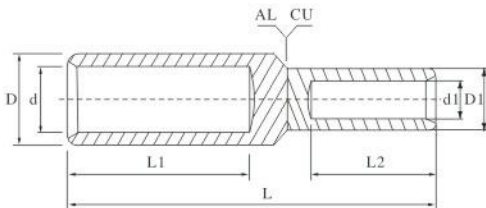
Technical Data

Material: 99.5% pure aluminium

99.95% pure copper

Joining Method: Friction Welding

Operation Temperature: -40°C to 125°C



Part No.	Cable Spec.(mm ²)		Dimensions(mm)						
	AL	CU	d	d1	D	D1	L	L1	L2
GTL-16	16	10	6	5	10	9	75	35	30
GTL-25	25	16	7	6	12	10	80	35	30
GTL-35	35	25	8.5	7	14	11	85	42	30
GTL-50	50	35	9.5	8.5	16	13	90	42	32
GTL-70	70	50	11.5	9.5	18	15	95	45	38
GTL-95	95	70	13.5	11.5	21	17	100	45	40
GTL-120	120	95	15	13.5	23	19	107	50	42
GTL-150	150	120	17	15	25	21	120	55	44
GTL-185	185	150	18.5	17	28	23	125	60	46
GTL-240	240	185	21	19	30	26	130	60	54
GTL-300	300	240	23	21	34	28	145	65	56
GTL-400	400	300	27	23	45	30	155	70	60
GTL-500	500	400	29	27	47	34	165	75	65
GTL-630	630	500	35	29	54	38	180	80	70

DIN STD Bi-Metal Connectors

DIN系列銅鋁連接管

Technical Data

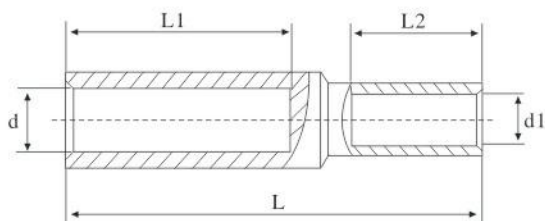
Material: 99.5% pure aluminium

99.95% pure copper

Joining Method: Friction Welding

Operation Temperature: -40°C to 125°C

Conformant Standards: DIN EN 1 3601



Part No.	Cable Spec.(mm ²)		Dimensions(mm)				
	AL	CU	d	d1	L	L1	L2
GTL-DIN 16/6	16	6	5.6	3.7	48	26	10
GTL-DIN 16/10		10		4.4			
GTL-DIN 16/16		16		5.5			
GTL-DIN 25/10	25	10	6.8	4.4	53	31	10
GTL-DIN 25/16		16		5.5			
GTL-DIN 25/25		25		7			
GTL-DIN 35/16	35	16	8	5.5	77	41	20
GTL-DIN 35/25		25		7			
GTL-DIN 35/35		35		8.2			
GTL-DIN 50/25	50	25	9.8	7	77	41	20
GTL-DIN 50/35		35		8.2			
GTL-DIN 50/50		50		10			
GTL-DIN 70/25	70	25	11.2	7	84	48	20
GTL-DIN 70/35		35		8.2			
GTL-DIN 70/50		50		10			
GTL-DIN 70/70		70		11.5			

DIN STD Bi-Metal Connectors

DIN系列銅鋁連接管

Part No.	Cable Spec.(mm ²)		Dimensions(mm)				
	AL	CU	d	d1	L	L1	L2
GTL-DIN 95/35	95	35	13.2	8.2	84	48	20
GTL-DIN 95/50		50		10	89		25
GTL-DIN 95/70		70		11.5	91		27
GTL-DIN 95/95		95		13.5	98		34
GTL-DIN 120/50	120	50	14.7	10	92	49	25
GTL-DIN 120/70		70		11.5	94		27
GTL-DIN 120/95		95		13.5	103		34
GTL-DIN 120/120		120		15.5	103		34
GTL-DIN 150/70	150	70	16.3	11.5	106	58.5	27
GTL-DIN 150/95		95		13.5	113		34
GTL-DIN 150/120		120		15.5	113		34
GTL-DIN 150/150		150		17	118		39
GTL-DIN 185/95	185	95	18.3	13.5	113	58.5	34
GTL-DIN 185/120		120		15.5	113		34
GTL-DIN 185/150		150		17	118		39
GTL-DIN 185/185		185		19	121		42
GTL-DIN 240/120	240	120	21	15.5	124	69	34
GTL-DIN 240/150		150		17	129		39
GTL-DIN 240/185		185		19	132		42
GTL-DIN 240/240		240		21.5	132		42
GTL-DIN 300/150	300	150	23.3	17	129	69	39
GTL-DIN 300/185		185		19	134		42
GTL-DIN 300/240		240		21.5	137		42
GTL-DIN 300/300		300		24.5	147		52
GTL-DIN 400/185	400	185	26	19	135	70	42
GTL-DIN 400/240		240		21.5	138		42
GTL-DIN 400/300		300		24.5	148		52
GTL-DIN 500/240	500	240	29	21.5	155	80	42
GTL-DIN 500/300		300		24.5	165		52
GTL-DIN 500/400		400		27.5	185		70

Bi-Metal Crimp & Reducing Links

BLK系列銅鋁連接管

Technical Data

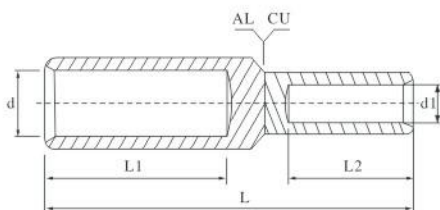
Material: 99.5% pure aluminium

99.95% pure copper

Joining Method: Friction Welding

Operation Temperature: -40°C to 125°C

Conformant Standards: AS4325-1(AUS.)



Part No.	Cable Spec.(mm ²)	Dimensions(mm)				
		d	d1	L	L1	L2
BLK6/4	6/4	3.5	3.0	70	32	21
BLK6/6	6/6	3.5	3.5	70	32	21
BLK10/6	10/6	4.5	3.5	70	32	21
BLK10/10	10/10	4.5	4.5	70	32	21
BLK16/10	16/10	5.5	4.5	70	32	21
BLK16/16	16/16	5.5	5.5	70	32	21
BLK25/16	25/16	7.5	5.5	70	32	21
BLK25/25	25/25	7.5	7.5	70	32	21
BLK35/25	35/25	8.5	7.5	70	32	21
BLK35/35	35/35	8.5	8.5	70	32	21
BLK50/35	50/35	9.5	8.5	70	32	24
BKL50/50	50/50	9.5	9.5	70	32	24
BLK70/50	70/50	11.5	9.5	70	32	24
BLK70/70	70/70	11.5	11.5	70	32	24
BLK95/70	95/70	13.5	11.5	110	60	32
BLK95/95	95/95	13.5	13.5	110	60	32
BLK120/95	120/95	15.5	13.5	110	60	32
BLK120/120	120/120	15.5	15.5	110	60	32
BLK150/120	150/120	16.5	15.5	120	60	40
BLK150/150	150/150	16.5	16.5	120	60	40
BLK185/150	185/150	18.5	16.5	120	60	40
BLK185/185	185/185	18.5	18.5	120	60	40
BLK240/185	240/185	22.0	18.5	120	60	40
BLK240/240	240/240	22.0	21.5	120	60	40
BLK300/240	300/240	23.5	21.5	120	60	40
BLK300/300	300/300	23.5	23.5	120	60	40
BLK400/300	400/300	26.5	23.5	155	70	55
BLK400/400	400/400	26.5	26.5	155	70	55
BLK500/400	500/400	30.0	26.5	155	70	55
BLK500/500	500/500	30.0	30.0	155	70	55
BLK630/500	630/500	34.0	30.0	160	70	56
BLK630/630	630/630	34.0	34.0	160	70	56

Bi-Metal Stalk Lugs

BS系列銅鋁棒管

Technical Data

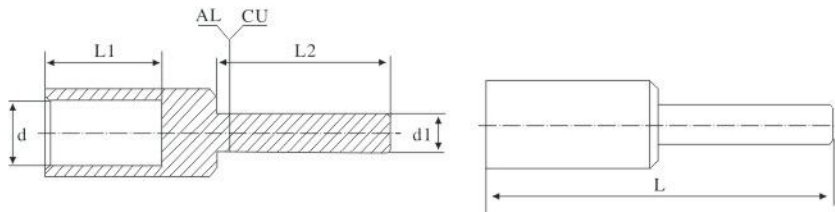
Material: 99.5% pure aluminium

99.95% pure copper

Joining Method: Friction Welding

Operation Temperature: -40°C to 125°C

Conformant Standards: AS4325-1(AUS.)



Part No.	Cable Spec.(mm ²)	Dimensions(mm)				
		d	d1	L	L1	L2
BS6/12	6	3.5	12	70	32	28
BS10/12	10	4.5	12	70	32	28
BS16/12	16	5.5	12	70	32	28
BS25/12	25	7.5	12	70	32	28
BS35/12	35	8.5	12	70	32	28
BS50/12	50	9.5	12	70	32	28
BS70/12	70	11.5	12	70	32	28
BS95/12	95	13.5	12	110	60	37
BS120/12	120	15.5	12	110	60	37
BS120/14	120	15.5	14	110	60	37
BS150/12	150	16.5	12	120	60	45
BS150/14	150	16.5	14	120	60	45
BS185/16	185	18.5	16	120	60	45
BS185/18	185	18.5	18	120	60	45
BS240/16	240	22.0	16	120	60	45
BS240/18	240	22.0	18	120	60	45
BS300/16	300	23.5	16	120	60	45
BS300/18	300	23.5	18	120	60	45
BS400/18	400	26.5	18	155	70	65
BS400/20	400	26.5	20	155	70	65
BS500/18	500	30.0	18	155	70	65
BS500/20	500	30.0	20	155	70	65
BS630/20	630	34.0	20	160	70	65